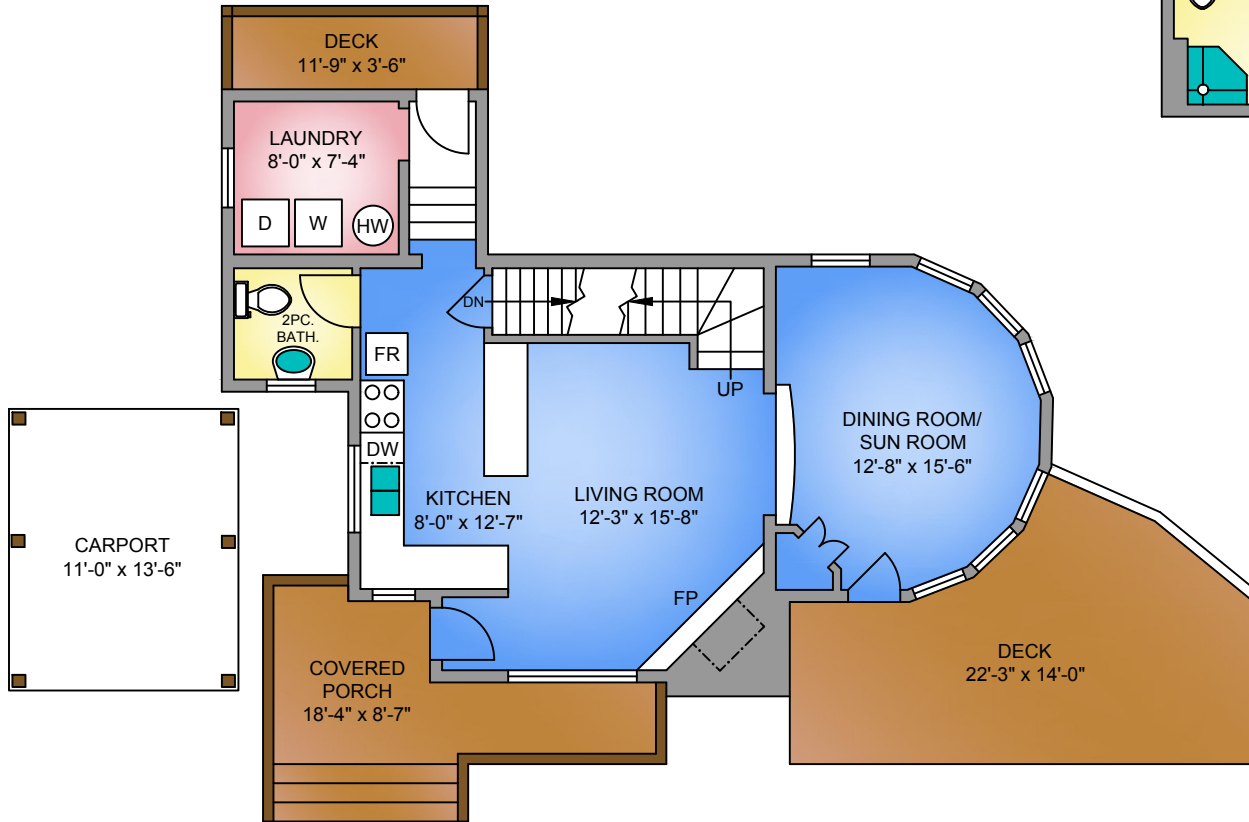


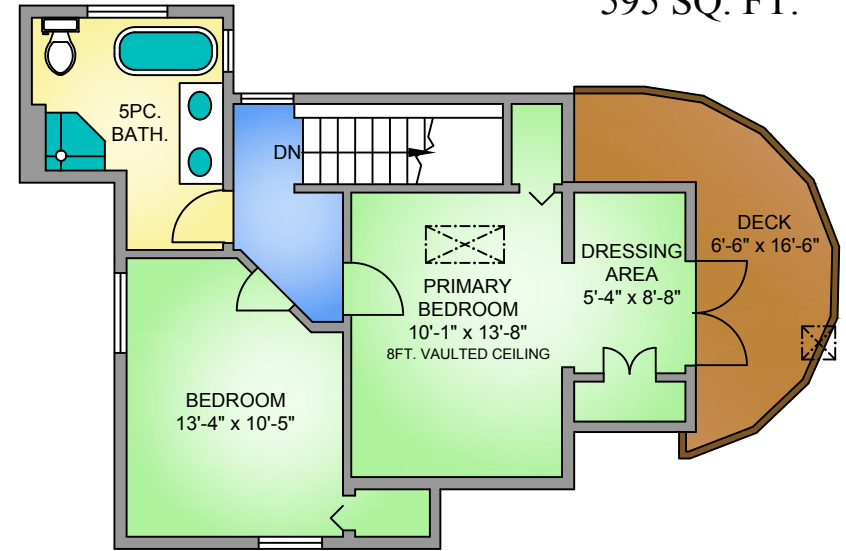
MAIN FLOOR

745 SQ. FT.
8FT. CEILING



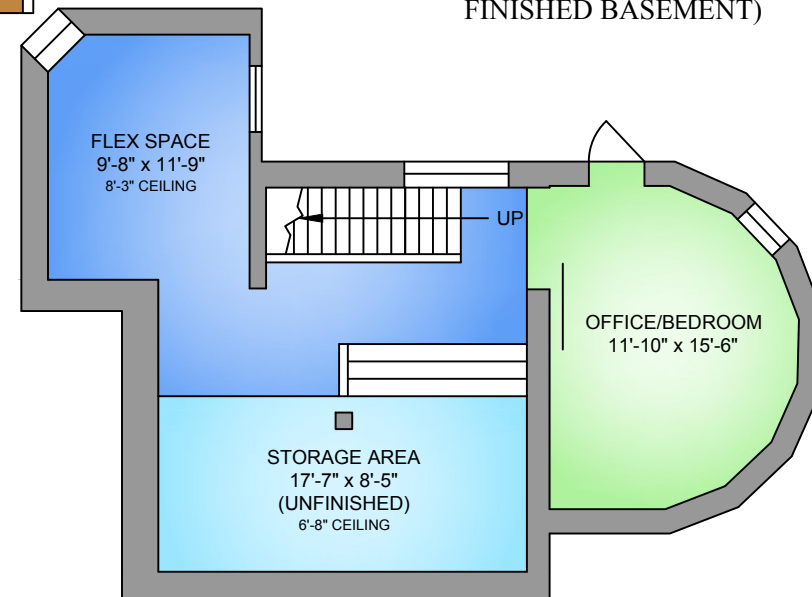
UPPER FLOOR

595 SQ. FT.



LOWER FLOOR

552 SQ. FT.
(PARTIALLY FINISHED BASEMENT)



294 QUEBEC DRIVE
MEASURED 19 APRIL, 2017, UPDATED 29 JUNE, 2022
PREPARED FOR THE EXCLUSIVE USE OF SANDRA SMITH
PLANS MAY NOT BE 100% ACCURATE, IF CRITICAL BUYER TO VERIFY.

FLOOR	AREA (SQ. FT.)		
	FINISHED	UNFINISHED	DECK / PATIO
MAIN	745	-	360
UPPER	595	-	104
LOWER	552	198	-
TOTAL	1892	198	464

NORTH

